

# **NPS Management Recommendation Winter 2020-2021**

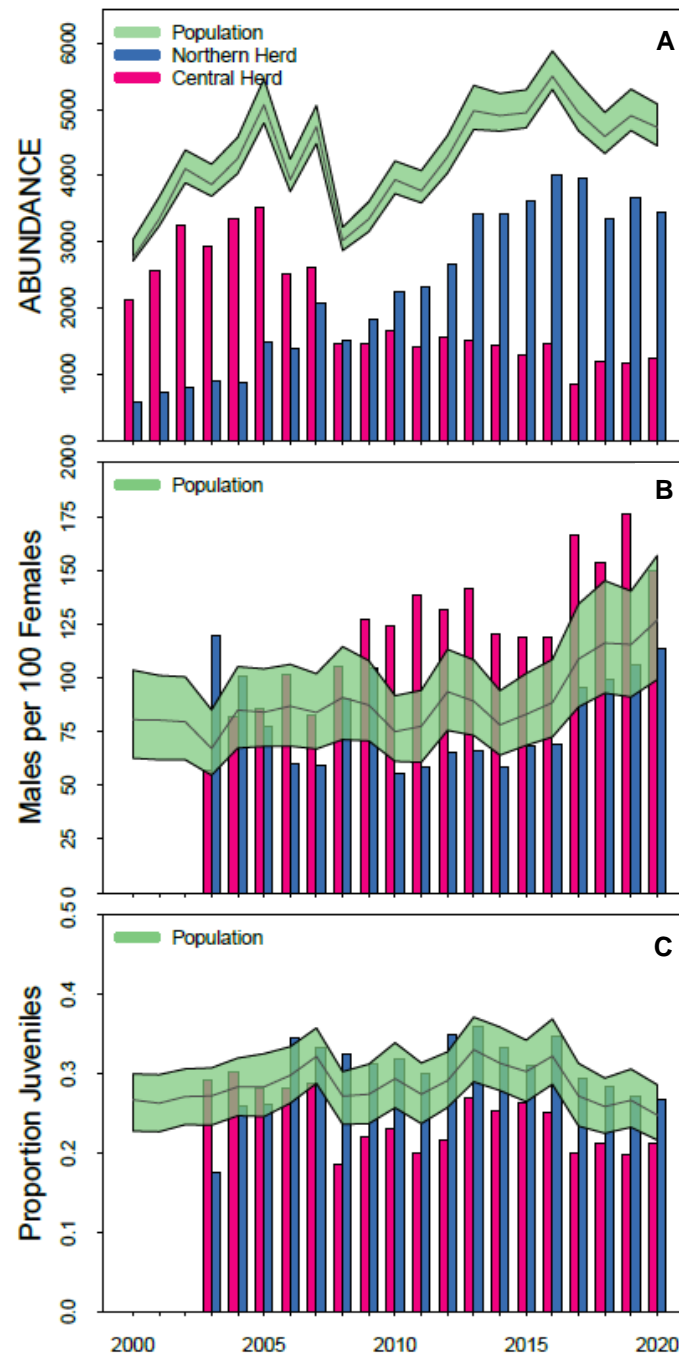
## **Recommendation Based on Population Modeling to Meet the Following Objectives:**

1. Sustain a viable, wild population
2. Remove fewer than 25% of the population and less than 1,000 animals per winter when possible
3. Maintain more than 1,000 bison in the central and northern herds
4. Maintain a balanced sex ratio
5. Maintain an age structure of about 70% adults and 30% younger animals

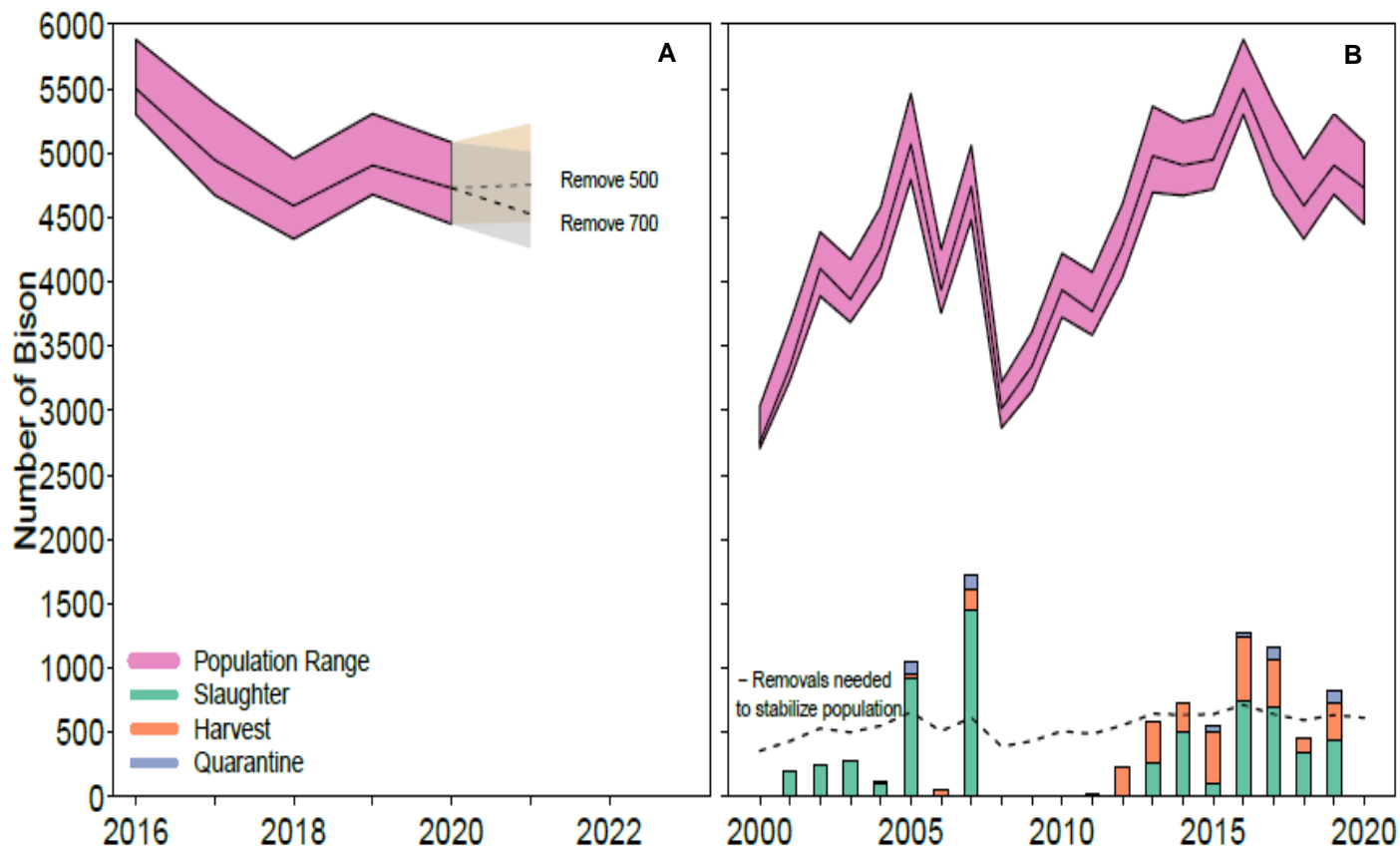
# NPS Management Recommendation Winter 2020-2021

## Current Status:

- About 3,992 bison at the end-of-winter and about 4,730 currently. Population declined slightly from last year and stable since 2013
- Estimate 834 removed last winter biased towards adult females and younger animals
- Summer air counts near 3,400 northern herd and 1,250 central herd
- Males outnumber females about 127 males to 100 females; larger differences in central herds
- Age structure 75% adults and 25% younger animals



# NPS Management Recommendation Winter 2020-2021



## RECOMMENDATION:

1. Remove 500-700 animals
2. Limit removals to bison near the northern park boundary
3. Balance hunting and rounding up animals for transfer to slaughter
4. No space to enter new animals into the quarantine program
5. If initial removals are met, up to 200 additional males could be harvested or rounded up in late winter